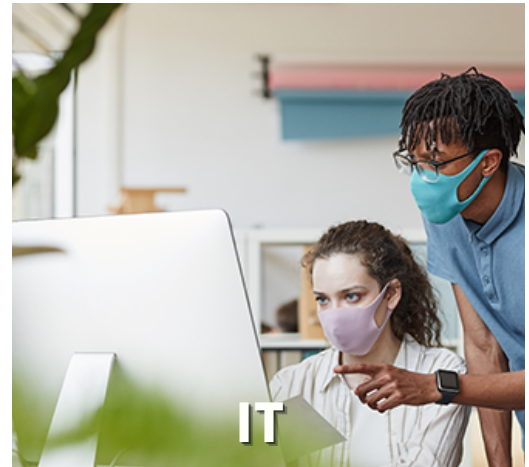


# Rebuilding Delaware's Workforce Through Rapid Training

## *Training for Jobseekers*



Learn More [forwarddelaware.com](https://forwarddelaware.com)

### Contacts for Jobseekers

- **Healthcare:** [go.dtcc.edu/WorkforceHealthcare](https://go.dtcc.edu/WorkforceHealthcare)
- **Construction & Trades:** [deskillscenter.org](https://deskillscenter.org)
- **Transportation & Logistics:** [polytechworks.com/trades-career-training-app](https://polytechworks.com/trades-career-training-app)
- **IT:** [techhiredelaware.org](https://techhiredelaware.org)
- **Hospitality/Food Service:** Email [training@delawarerestaurant.org](mailto:training@delawarerestaurant.org)

### Looking for more training options?

Go to Delaware JobLink: [joblink.delaware.gov](https://joblink.delaware.gov)  
or request info by emailing us at [employment.training@delaware.gov](mailto:employment.training@delaware.gov)



# Rebuilding Delaware's Workforce Through Rapid Training

## *Resources for Employers*



Learn More [forwarddelaware.com](http://forwarddelaware.com)

### Contacts for Employers

- **Healthcare:** Email your request to [bhorse7@dtcc.edu](mailto:bhorse7@dtcc.edu)
- **Construction & Trades:** Email [jacqueline.hawkes@nccvt.k12.de.us](mailto:jacqueline.hawkes@nccvt.k12.de.us)
- **Transportation & Logistics:** [JEREMY.MCENTIRE@polytech.k12.de.us](mailto:JEREMY.MCENTIRE@polytech.k12.de.us)
- **IT:** Email your request to [info@techhiredelaware.org](mailto:info@techhiredelaware.org)
- **Hospitality/Food Service:** Email Carrie Leishman at [carrie@delawarerestaurant.org](mailto:carrie@delawarerestaurant.org)